



Galaxy

amusement sales

YOUR FULL LINE MIDWAY SUPPLIER

2014 Catalog
www.galaxysales.net

800-404-5873

Email: galaxysales@verizon.net



GALAXY AMUSEMENT SALES INC.

123 W. Bloomingdale Ave. #259

Brandon, FL 33511

Warehouse:

333 Falkenburg Road North #A126-127

Tampa, FL 33619

800-404-5873

813-681-6666

813-653-0365 Fax

Email—Galaxysales@verizon.net

GALAXY AMUSEMENT SALES INC. is a specialty distributor of Industry Leading Electrical, Lighting, LED, Sound Reinforcement, Special Effects, Paint and Custom Repeater Messaging Systems headquartered in Brandon, Florida.

As a key supplier to the Amusement Industry for 20 years, Galaxy has partnered with Industry leading manufacturers to meet, and surpass the needs of its customers. We cannot be beaten when it comes to experience, expertise, quality, and customer service.

With three generations of experience, Galaxy Amusement Sales is your “one-stop” shopping point for “Time Critical” Industries. Our products include a wide selection of items for markets such as Carnivals, Amusement Parks, Stage & Lighting, Rental Companies, Convention Centers, Arenas, Family Entertainment Centers, Fairs, and Power Distribution Providers.

If you are searching for a partner in your company’s success, GALAXY AMUSEMENT SALES Is the go to source for ALL your needs.

The Kunz Family

Wayne, Scott, & Todd



TABLE OF CONTENTS:

ELECTRICAL 4-15

CAM DEVICES	4-7
CL & CLS	4
CLM	5
ADAPTERS	6
17 SERIES	6
45 DEGREE	7
CONNECTORS	8-11
EUROPEAN	8-9
CONTROL CABLE	10
DISTRIBUTION	11
PLUGS & RECEPTACLES	12-15

HARDWARE 16-19

PINS	16-17
HITCH	16
LYNCH, SAFETY, SNAP	17
MIDWAY	18
APRONS	18
HOODS, HINGES,	18
FITTINGS, JACKJAW	18
TAPE	19
HOSE/CLAMPS	19
FOOD GRADE HOSE	19
CLAMPS/FITTINGS	19
WATER TREE	19

KLEIN TOOLS 20-25

TOOL ORGANIZERS	20
METERS, TESTERS	21
PLIERS	22
SCREWDRIVERS	23
HOLE CUTTERS, HEX KEY SET	24
WRENCHES	25

LIGHTING 26-34

BALLASTS	26
FLOURESCENTS	27-28
HALOGEN & HALIDE	29-30
LIGHTING BULBS	31-34
CABOCHONS	31
INCANDESCENT	32
LED'S	33-34

LUBRICANTS 35

RV SUPPLIES 36-37

PAINT 38

SOUND 39-42

RACKS	39
AMPLIFIERS	40
MICROPHONES	40
MIXERS	41
PROCESSORS	41
REPEATERS	41
SPEAKERS	42

SPECIAL EFFECTS 43

WIRE & CABLE 44-47

CABLE PROTECTORS	44
PORTABLE POWER	45
SOOW & TYPE W	46
EXTENSION CORDS	47
MATTING	47

ELECTRICAL CONNECTORS

CAM TYPE DEVICES—CL & CLS

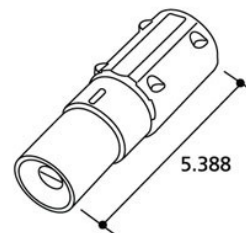
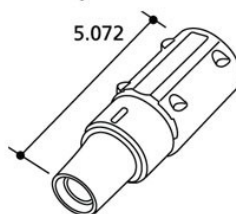
INLINE—CL SERIES 400A/600V

CL Series cam type devices assemble easily with hand tools. They offer superior durability and safety. Built with copper contacts for better performance and reduced heat rise, the CL Series offers universal strain relief for all wire gauges. One housing fits #6-4/0 cable.

CL40FB



CL40MB



INLINE—CLS SERIES 400A/600V

CLS Series inline connectors have a non-conductive retaining screw which passes through the metal contact and fastens at both ends to the retaining ring. Constructed of solid weatherproof materials.

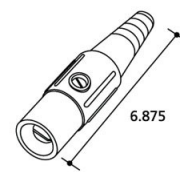
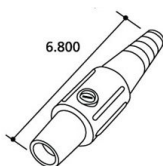
CLS40FB

CLS20FB



CLS40MB

CLS20MB

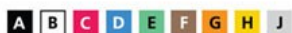
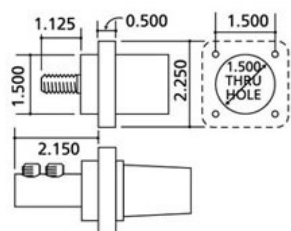


PANEL MOUNT



CL40FRB

CL40MRB



CLL3R



CL40FC



CL40MC

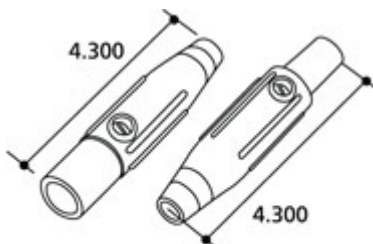
ELECTRICAL CONNECTORS

INLINE-CLM SERIES 150A/600V



CLM2F

CLM2M



CAM TYPE DEVICES—CLM SERIES

CLM Series inline connectors have a Santoprene housing. The Nylon retaining screw passes through the housing and Brass contact to provide maximum fixation. Will withstand heavy torque loading. Constructed of weatherproof materials, products are UL listed and CSA certified. NEMA 3R and NEMA 4R rated for wet locations. Connectors accept up to 150A/600V. Stock colors shown.



CLM3R



CLMMC



CLMFC

PANEL MOUNT



CLMFRS

150A/600V

3/4" - 8 Threaded Stud



CLMMRS



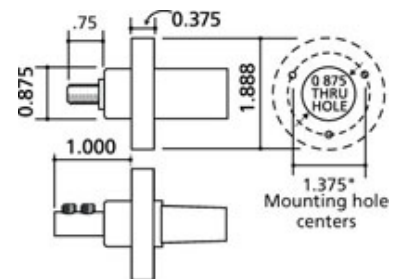
CLMFR2

150A/600V

Double Set Screw #8—#2 Wire



CLMMR2



CAM REDUCERS—CL, CLM, CLS



CLMADFF
400A F TO 150A F



CLMADMF
400A M TO 150A F



CLMADFM
400A F TO 150A M



CLMADMM
400A M TO 150A M



CLMFF



CLMMM

ELECTRICAL CONNECTORS

ADAPTERS



CPT
Paralleling T
M-M-F



CTT
Tapping T
M-F-F



CA3F
Hard 3Fer
M-F-F-F



CDMM
Male to Male
Coupler



CDFF
Female to Female
Coupler

ASSEMBLED ADAPTERS

15CLF/16CLF
Female
Connector
Extractor



15CLM/16CLM
Male
Connector
Extractor



CPTFST
Soft Paralleling T
M-M-F



CTTFST
Soft Tapping T
M-F-F

CA3MST
Reverse
Soft 3Fer
F-M-M-M



CA3FST
Soft 3Fer
M-F-F-F



CAM TYPE DEVICES—17 SERIES

17 Series—Rated up to 690 AMPS
Continuous Cable 250-75MCM



17D21



17D23



17R23

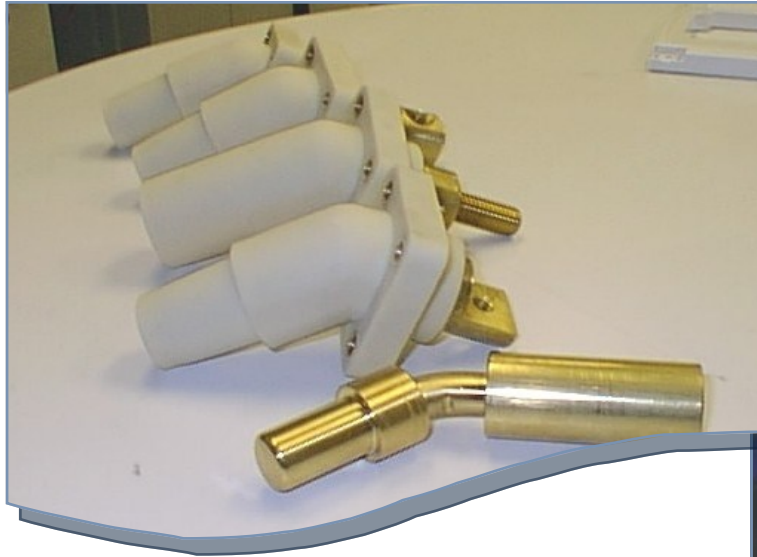


17R24



17P21

45 DEGREE CAM DEVICES

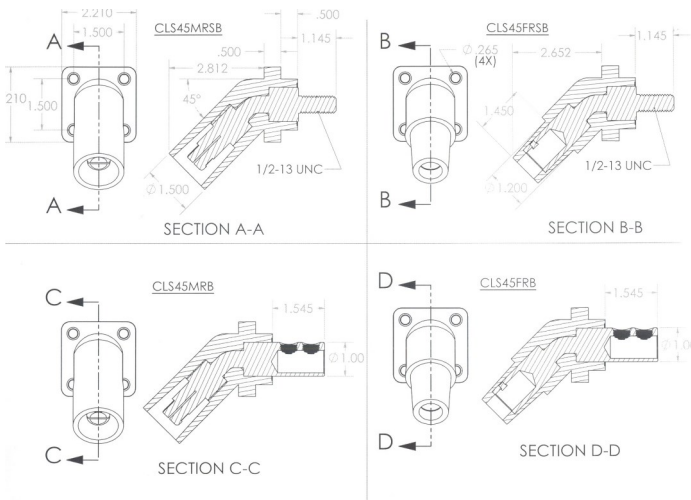


ELECTRICAL CONNECTORS

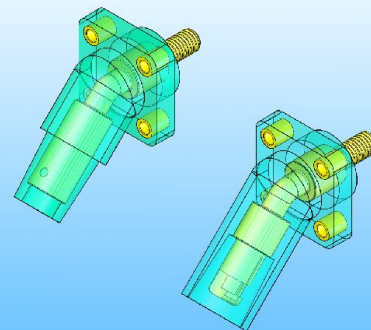
Available Colors:
Black, White, Red,
Blue, Orange, Green,
Brown, Yellow

NEW!

**400A/600V 45 Degree Cam Devices!
4 Offset Configurations!
Available in various colors!**

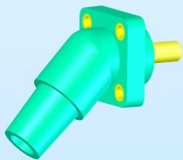


SANTOPRENE WEATHER RESISTANT HOUSING



FEMALE

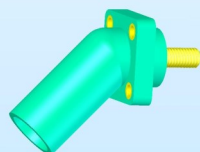
#32432 Series—1 1/4" Threaded Stud
#32462 Series—2" Long Stud



**BRASS BUSHINGS
FOR SECURE
MOUNTING**

MALE

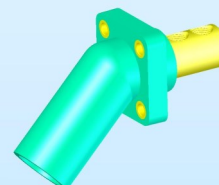
#32431 Series—1 1/4" Threaded Stud
#32461 Series—2" Long Stud



**ONE PIECE
SOLID BRASS
CONTACTS**

MALE

#32441—Double Set Screw Series



EUROPEAN CONNECTORS

EPIC® Rectangular Connectors

Plugs & Receptacles



HA 3



HA 4



Description	Plug	Receptacle
HA 3	10420000	10421000
HA 4	10431000	10432000

These inserts fit in the HA 3/4 Series Housings.

HBS

of Contacts: 6, 12 (+PE)
 Rated Voltage: 600V
 Rated Current: 35A
 Termination: Screw
 Wire Size: AWG 20 - 10 ; (0.5 - 6.0 mm²)



EPIC® HBS		
# of Contacts	6	12 *
Page #	Pg 295	Pg 296
Plug	10170000	10170600
Receptacle	10171000	10171600

* HBS 12 = HBS 6 P/N + HBS 12 P/N

Mating Housings	
Insert	Housing
HBS 6	HBE 16
HBS 12	HBE 32

HBE



of Contacts: 6, 10, 16, 24, 32, 48 (+PE)
 Rated Voltage: 600V
 Rated Current: 16A
 Termination: Screw, Crimp, Cage Clamp
 Wire Size: AWG 20 - 14 (0.5 - 2.5 mm²)
 AWG 20 - 12 (0.5 - 4 mm²) - Crimp

Screw Terminated

Please note that contacts must be purchased separately for crimp terminated inserts.

EPIC® HBE: Screw Terminated with Wire Protection

# of Contacts	6	10	16	24	32 *	48 *
Page	Pg 265	Pg 267	Pg 269	Pg 271	Pg 273	Pg 274
Plug	10190000	10192000	10194000	10196000	10202000	10204000
Receptacle	10191000	10193000	10195000	10197000	10203000	10205000

* HBE 32 = HBE 16 P/N + 32 P/N; HBE 48 = HBE 24 P/N + 48 P/N

MIXED POWER

of Contacts: 4 Pwr/0 Signal, 4 Pwr/2 Signal, 4 Pwr/8 Signal
 Rated Voltage: 600V
 Rated Current: 16 - 80A
 Termination: Screw
 Wire Size: up to AWG 6 (Power)
 up to AWG 14 (Signal)



Mixed Power			
# of Contacts	4 P/0 S	4 P/2 S	4 P/8 S
Page #	Pg 349	Pg 349	Pg 350
Plug	MP/M400	MP/M402	11/2408
Receptacle	MP/F400	MP/F402	11/1408

P= Power, S=Signal

Mating Housings	
Insert	Housing
4P/0 S	HBE 16
4P/2 S	HBE 16
4P/8 S	HBE 24

EPIC® Rectangular Connectors

HA Series Housings



EPIC® HA 3/4 Series Rectangular Connectors: Single Lever on Bases

Material	HOODS						SURFACE MOUNT BASE & CABLE COUPLER HOODS				PANEL MOUNT BASE	
			NPT		PG		NPT		PG			
	PG	NPT	Without Cable Gland		With Cable Gland		Without Cable Gland		With Cable Gland		STANDARD	ANGLED
Zinc Die Cast	11	1/2"	105121NP	105123NP	10426500	10427500	105127NP	105129NP	10424500	10429500	10422500	10423500
Black Plastic	11	1/2"	104255NP	104273NP	10426700	10620600	-	104292NP	-	10620300	10422200	10423100
Grey Plastic	11	1/2"	104260NP	104270NP	10426400	10427100	104240NP	104290NP	10424200	10429100	10422000	10423000

EPIC® Rectangular Connectors

HBE Series Housings



EPIC® HBE Series Rectangular Connectors: Single Lever on Bases						
	PG	HBE 6	HBE 10	HBE 16	HBE 24	HBE 48
Top Entry Hood with Single Lever Bolts	13.5	100110	-	-	-	-
	16	100210	10040900	-	-	-
	21	-	10040700	10080900	10121900	-
	29	-	-	-	10111900	10155000
	36	-	-	-	-	10156000
	42	-	-	-	-	10157000
Side Entry Hood with Single Lever Bolts	13.5	100120	-	-	-	-
	16	100220	10042900	-	-	-
	21	-	10042800	10082900	10113900	-
	29	-	-	10092900	10123900	10158000
	36	-	-	-	-	10159000
	42	-	-	-	-	10160000
Panel Mount Base with Single Lever	-	-	-	-	-	-
	Without dust cover	-	100030C0	10032900	100729C0	101029C0
	With dust cover	-	100040C0	10033900	100739C0	101039C0
Surface Mount Base with Single Lever	Without dust cover and no dust cover bolts					
	-	-	-	-	-	10152000
	2 Entries	16	100060	10035900	-	-
	1 Entry	16	-	10034900	-	-
	2 Entries with dust cover	16	100090	10038900	-	-
	1 Entry with dust cover	16	100070	10038900	-	-
	2 Entries	21	-	-	10075900	10105900
	1 Entry	21	-	10034700	10074900	10104900
	2 Entries with dust cover	21	-	-	10078900	10109900
	1 Entry with dust cover	21	-	-	10076900	10107900
	Cable Coupler Hood with Single Lever					
	13.5	100140C0	-	-	-	-
	16	100240C0	10048900	-	-	-
	21	-	70042200	10086900	10127900	-
	29	-	-	-	10117900	-



EPIC® HBE Series Rectangular Connectors: Double Levers on Bases					
	PG	HBE 10	HBE 16	HBE 24	HBE 32
Top Entry Hood with Double Lever Bolts	16	100400C0	-	-	-
	21	100401C0	100800C0	101210C0	10133000
	29	-	100900C0	101110C0	10134000
	36	-	-	-	-
	42	-	-	-	-
Side Entry Hood with Double Lever Bolts	16	100420C0	-	-	-
	21	100421C0	100820C0	101130C0	10135000
	29	-	100920C0	101230C0	10136000
Panel Mount Base with Double Levers	-	100320C0	100720C0	101020C0	101320C0
Surface Mount Base with Double Levers					
2 Entries	16	100350C0	-	-	-
1 Entry	16	100340C0	-	-	-
2 Entries	21	-	100750C0	101050C0	-
1 Entry	21	-	100740C0	101040C0	-
2 Entries	29	-	-	-	101380C0
1 Entry	29	-	-	-	101370C0
Cable Coupler Hood with Double Levers	16	100460C0	-	-	-
	21	70040200	100860C0	101270C0	101390C0
	29	-	100960C0	101170C0	101395C0

General purpose SKINTOP® cable glands are available in PG or NPT sized 0.079 to 1.70, metallic or non-metallic.



ELECTRICAL CONTROL CABLE

ÖLFLEX® Control Cable

ÖLFLEX® TRAY II

Flexible & Oil Resistant Machine and Tray Cable

with both UL & CSA TC Approval for Industrial Applications



ÖLFLEX® Tray II is an industrial grade tray cable with superior oil performance for long cable life. It has a pressure extruded jacket and fine copper stranding for excellent flexibility making it much easier to pull through tray. With UL TC-ER approval, no conduit is needed so you can reduce material costs along with saving on labor.

Recommended Applications:

Industrial plant expansions, Automotive plants, Tray wiring, anywhere that VNTC® cables are used

Additional sizes with tinned copper braid shielding also available.

Application Advantage:

- Oil resistant pressure extruded PVC jacket for improved flexibility
- Easier to pull than standard tray cables minimizing labor costs
- UL TC-ER approval to reduce material costs. No conduit is needed.
- Black numbered conductors for easy identification
- UV resistant and direct burial
- UL wet rating 75°C

ÖLFLEX® TRAY II Construction:

Finely stranded bare copper conductors; specially blended PVC/nylon insulation; specially formulated oil resistant black PVC jacket.



ÖLFLEX® Tray II: Flexible and Oil Resistant Tray Cable

Part Number	Number of Conductors Includes ground	Nominal Outer Diameter Inches	mm	Copper Weight lbs/ft	kg/m	Approx. Weight lbs/ft	kg/m
18 AWG (19/30) 1.00 mm²							
221803	3	.297	7.5	19	57	85	
221804	4	.320	8.1	25	66	98	
221805	5	.346	8.8	31	77	115	
221807	7	.373	9.5	44	100	149	
221809	9	.429	10.9	56	112	167	
221812	12	.477	12.1	75	171	255	
221818	18	.587	14.9	113	245	365	
221825	25	.664	16.9	156	322	479	
221850	50	.939	23.9	313	646	961	
16 AWG (26/30) 1.50 mm²							
221603	3	.325	8.3	27	69	103	
221604	4	.351	8.9	36	83	124	
221605	5	.381	9.7	45	98	146	
221607	7	.412	10.5	64	127	189	
221608	8	.444	11.3	73	136	203	
221609	9	.476	12.1	82	171	255	
221612	12	.565	14.4	109	220	328	
221616	16	.621	15.8	145	271	403	
221618	18	.652	16.6	163	289	431	
221625	25	.741	18.8	227	397	592	
14 AWG (48/30) 2.50 mm²							
221641	41	.986	25.0	372	625	931	
221650	50	1.048	26.6	454	760	1132	
221661	61	1.085	27.6	553	769	1148	
12 AWG (56/0117) 4 mm²							
221403	3	.362	9.2	45	87	130	
221404	4	.392	10.0	60	107	159	
221405	5	.427	10.8	75	128	191	
221407	7	.463	11.8	105	169	252	
221409	9	.571	14.5	135	225	335	
221412	12	.636	16.2	179	308	459	
221418	18	.737	18.7	269	439	654	
221425	25	.886	22.5	374	587	874	
10 AWG (82/0117) 6 mm²							
221203	3	.423	10.7	75	111	165	
221204	4	.460	11.7	100	152	226	
221205	5	.503	12.8	125	187	279	
221207	7	.581	14.8	176	258	384	
221004	4	.578	14.7	147	265	394	
221005	5	.631	16.0	184	317	472	
221007	7	.686	17.4	257	443	661	

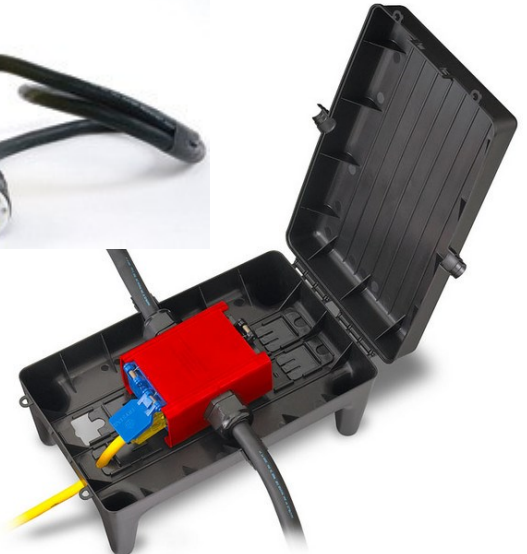


EPIC® Pin & Sleeve Connectors are designed to meet the power connectivity needs and safety requirements of North American and European industrial applications. They conform to IEC 60309-1, -2 and UL1682 and UL1686; are cULus and CE marked; and are available in splash-proof (IP44) and watertight (IP67) models.

ELECTRICAL DISTRIBUTION



- 50A input & feed through, 6 x 20A GFCI & 30A 125/250V receptacle
- Noncorrosive tuff box powder coated in aluminum or stainless steel
- Available on legs or cage in variety of colors
- UL 1640 Listed, C-UL 50 Listed enclosure NEMA 3R



400A 3 Phase input/
output or dead end
4 receptacle on 2 sides
6 receptacle on 3 sides
Powder coated aluminum
Variety of colors



CONVERTIBLE 400A

TUFF PANEL

400A 3 Phase input/
output or dead end
Up to 10 receptacle
Configuration available
Full load center with
Square D

60 FOOT QUAD BOX STRINGER



10/5 or 12/5 SOOW
20A/30A with M/F Nema
L21-20/L21-30



ELECTRICAL CONNECTORS

PLUGS & RECEPTACLES

15 AMP-MIDGET



PLUG



CONNECTOR



FLANGED
INLET



FLANGED
OUTLET



WP1 Cover

VOLTS

CONFIGURATION

HBL7465

HBL7464

HBL7467

HBL7468

125



2P 2W
NEMA
ML-1P ML-1R



HBL7594

HBL7593

HBL7595

HBL7596

125



2P 2W
NEMA
ML-2P ML-2R



HBL7485

HBL7484

HBL7486

HBL7487

125/250



3P 3W
NEMA
ML-3P ML-3R



15 AMP-STRAIGHT—125V



PLUG



CONNECTOR



SINGLE



DUPLEX



INLET



OUTLET



WP1 Cover

CONFIGURATION

HBL5266

HBL5269C

HBL5261

HBL5262

HBL5278C

HBL5279C

2P 3 W
NEMA
5-15



HBL4720C

HBL4729C

HBL4710

HBL4700

HBL4716C

HBL4715C

2P 3W
NEMA
L5-15
GROUND



HBL7567C

HBL7565C

HBL7582

HBL7580

HBL7556

HBL7557

3P 3W
NON-NEMA



Not Grounded
Not UL listed

PLUG & RECEPTACLES

ELECTRICAL CONNECTORS

20 AMP—NEMA



PLUG



CONNECTOR



RECEPTACLE



INLET



OUTLET



WP2 Cover

VOLTS

CONFIGURATION

HBL2311	HBL2313	HBL2310	HBL2315	HBL2316	125	2P 3 W NEMA L5-20	
LEV2361	LEV2363	LEV2360	LEV2365	LEV2366	125/250	3P 3 W NEMA L10-20	
HBL2411	HBL2413	HBL2410	HBL2415	HBL2416	125/250	3P 4W NEMA L14-20	
LEV2441	LEV2443	LEV2440	LEV2445	LEV2446	120/208	4P 4W NEMA L18-20	
HBL2511	HBL2513	HBL2510	HBL2515	HBL2516	120/208	4P 5W NEMA L21-20	



20 AMP—NON NEMA

LEV7310	LEV9965C	LEV7314C	LEV7325C	LEV3326C	125/250	3P 3 W NON NEMA	
LEV7411C	LEV7410B	LEV7413C	LEV7408C	LEV7409C	120/208	4P 4W NON NEMA	

ELECTRICAL CONNECTORS






PLUGS & RECEPTACLES

30 AMP TWIST LOCKING DEVICES



WP2 Cover



PLUG	CONNECTOR	RECEPTACLE	FLANGED INLET	FLANGED OUTLET	VOLTS	CONFIGURATION
HBL2611	HBL2613	HBL2610	HBL2615	HBL2616	125	2P 3 W L5-30 
HBL2711	HBL2713	HBL2710	HBL2715	HBL2716	125/250	3P 4W L14-30 
HBL2721	HBL2723	HBL2720	HBL2725	HBL2726	250	3P 4W L15-30 
LEV2751	LEV2753	LEV2750	LEV2755	LEV2756	120/208	4P 4W L18-30 
HBL2811	HBL2813	HBL2810	HBL2815	HBL2816	120/208	4P 5W L21-30 






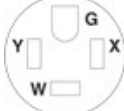
WP2 Cover



50 AMP TWIST LOCKING DEVICES

					
PLUG	CONNECTOR	RECEPTACLE	FLANGED INLET	VOLTS	CONFIGURATION
LEV3765C	LEV3764C	LEV3769	LEV3775	250 DC 600 AC	3P 4 W 
LEV7765C	LEV7764C	LEV7369	LEV7958	250 DC 600 AC	3P 4 W 
LEVCS6365C	LEVCS6364C	LEVCS6369	LEVCS6375	125/250	3P 4W 
LEVCS8365C	LEVCS8364C	LEVCS8369	LEVCS8375	250	3P 4W 

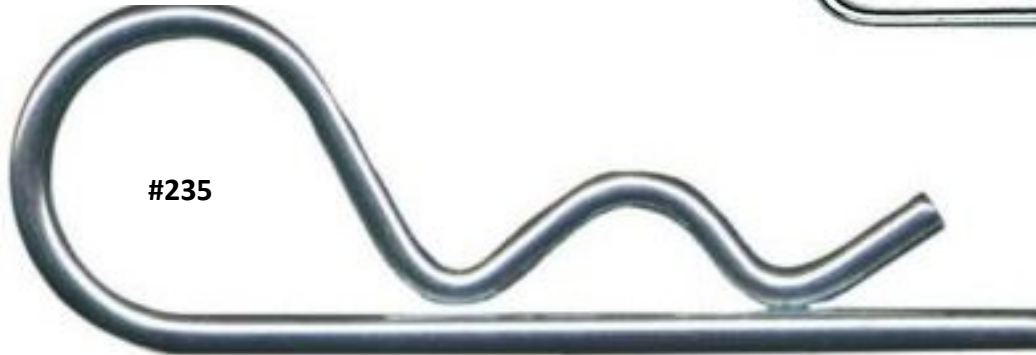
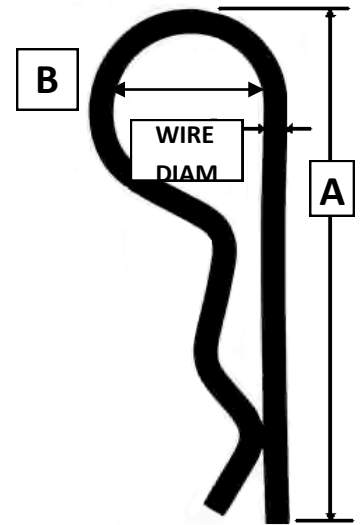
50 & 60 AMP STRAIGHT DEVICES

					
PLUG	RECEPTACLE	ANGLE PLUG	VOLTS	CONFIGURATION	
HBL9451C	HBL9450A	HBL9452	125/250		
HBL9461C	HBL9460A	HBL9461	125/250		

HARDWARE SUPPLIES

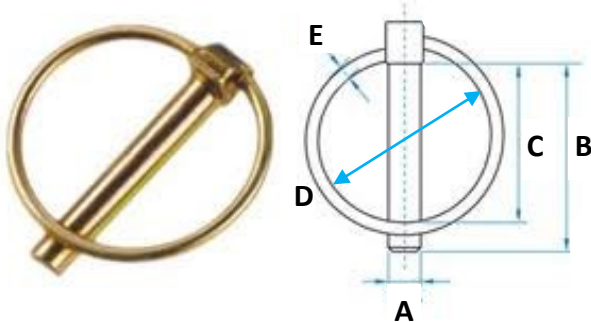
HITCH PINS—R KEYS

Actual Size



SIZE	ITEM#	DIM. A	DIM. B	WIRE DIAM.
#3	203	1 5/8	3/8	.093
#6	206	3 1/4	7/8	.177
#7	207	2 5/16	5/8	.093
#9	209	3 5/16	3/4	.148
#11	21-06	2 9/16	9/16	.125
#35	235	5 1/4	1 1/2	.243

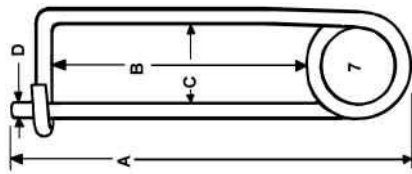
LYNCH PINS



ITEM#	DIM. A	DIM. B	DIM. C	DIM. D	DIM. E
63-01	3/16	1 9/16	1 1/4	1 13/32	9/64
63-02	1/4	1 9/16	1 1/4	1 13/32	9/64
63-03	5/16	1 9/16	1 1/4	1 13/32	9/64
63-04	7/16	1 9/16	1 11/32	1 17/32	9/64
7637	3/16	1 1/4	7/8		

Quick disconnect fasteners are zinc electroplate and dichromate dipped for corrosion resistance. Self-locking ring allows the pin to be held securely in place and provides an easy grip for quick removal.

SAFETY PINS

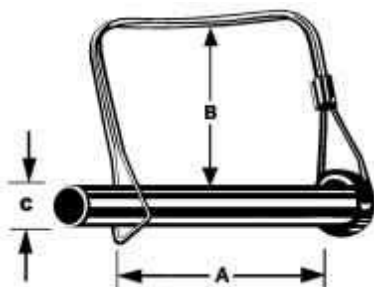


Positive locking pin for retaining Clevis pin is made from hard-drawn M-B plated spring wire.

ITEM#	DIM. A	DIM. B	DIM. C	DIM. D
25-04	1 3/4	1 1/16	3/8	.058
25-05	2 3/4	1 11/16	5/8	.091
25-06	4 3/8	2 13/16	13/16	.120
25-07	5 3/4	3 3/4	1 1/8	.148
53	5 1/4	3	1 1/2	.177
54	8 1/4	5	1 5/8	.243
55	9	5	2 1/4	.243

SNAPPER PINS

Quick connect and disconnect pins for use on equipment and Shafts up to 2 1/2" in diameter. Entire assembly is zinc-plated.



ITEM#	PIN DIAM.	DIM. A	DIM. B
28-01	1/4	1 3/4	1 1/2
28-02	5/16	2 1/2	1 5/8
28-03	3/8	1 1/2	1 1/2
28-04	3/8	2 1/4	1 1/2
28-07	1/4	2 1/2	1 3/4

HARDWARE SUPPLIES

APRONS

APR-C3

3 POCKET CLIP APRON

APR-C5

5 POCKET CLIP APRON



HOOKS/HINGES/FITTINGS



JOINT HINGES

HDW-JTHG

2 pc set—2 1/2"x2 1/2"

Loose pin hinge.



3/4" ELBOW SET

HDW-34EL

2 pc set creates an
Awing corner.

STOCK

HOOKS

HWD-STHK



DBL HUMP CAMEL BACK

HDW-CBX2

Used to attach pipe end to
joint frame.

3/4" PIPE END

HDW-PE34

For quick
lowering
of awnings.



The New Force In Stake Pulling!

**Pulls Tent Stakes
Straight Out!**

- Fast and easy extraction
- Lightweight (21 lbs)
- Powerful all steel construction
- Prevents damage to asphalt
- Positive grip prevents back, shoulder strain, whiplash from slipping pullers
- Pulls 3/4" to 1-1/4" diameter stakes or rebar
- Works with stake bars and flat base plates (optional adapter required)



JackJaw® 302 in raised
position with adapter



JackJaw® 301 pulling
angled stake



*Eliminate dangerous, costly operations
and bent, unusable stakes*

**Increase efficiency and reduce costs
with JackJaw® Stake Extractors!**

*"Our guys fight over who gets to use the JackJaw®
stake puller. We plan to replace all of our old stake
pullers with JackJaws."*

Bart Nye, President
Prime Time Party Rental, Dayton, Ohio

Patent Pending

HARDWARE SUPPLIES



**TEMFLEX VINYL
ELECTRICAL TAPE**
3/4" X 36 YD
UL & CSA CERTIFIED
Available in other
colors.

T-HV-TAPE
3 X 1000'
HIGH VOLT SAFETY TAPE



**BRIGHT YELLOW
& BLACK
NON-SKID TAPE**
4 X 60



BLACK NON-SKID TAPE
4 X 60'
2 X 60'



HOSE/CLAMPS

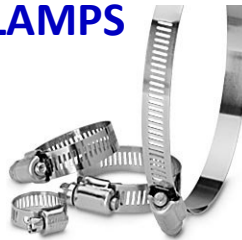
NEXBRAID REINFORCED NSF 51 FOOD GRADE HOSE

FLEXIBLE CLEAR PVC HOSE WITH TRANSPARENT BLUE TINT & BRAID PATTERN REINFORCEMENT. TEMP. RANGE— +25 TO +15-F/-5 TO +65C GREAT FOR AIR & WATER HOSE, BEVERAGE DISPENSING, POTABLE WATER, LIGHT VACUUM, AIR BREATHING SUPPLY, PNEUMATICS, POWDERED FOOD TRANSFER, FLEXIBLE CONDUIT & HARNESS. RATED—FDA INGREDIENTS, NSF 51 CERTIFIED.



**YELLOW ALSO
AVAILABLE**

CLAMPS



FITTINGS

5/8" X 3/4" SOLID BRASS
CORROSION RESISTANT FITTINGS



WF1787 SWIVEL X FGH

WF1782 I X MGH



WATER TREE WT-11 STACKABLE—11 OUTLET



Tradesman Pro Organizer
Electrician's Backpack
39 Pockets, wide opening,
Tough, durable!
#55421-BP



Tradesman Pro Organizer
10 Inch Tote
40 pockets, removeable
Zipper bag, tough, durable!
#55416-10



Tradesman Pro Organizer
Ultimate Electrician's Bag
55 pockets, shoulder strap
and handles for easy carry-
ing, tough, durable!
#55418-19

Zipper Bags

No. 10 Canvas with heavy-duty brass zipper.
Cordura ballistic nylon high performance fabric.



5139C



5139



5139B



Professional Series Multimeters

Solid and rugged construction, data hold
Features saves measurements for later
Viewing.

#M2000



The Klein MM500 Auto-Ranging Multimeter is a waterproof digital multimeter is ideal for measuring and trouble-shooting electrical circuits. It is capable of measuring AC/DC voltage up to 750V, continuity up to 25Ω and resistance up to 4000Ω

Professional Series Clamp Meter

Built in magnetic mount for hands-free
Convenience, non-contact voltage de-
tection at the push of a button, quick
response. #CL2500



12:1 Dual Laser Infrared Thermometer

Backlit, Fahrenheit or Celsius button,
K-Type Thermocouple Input, Auto shut
Off, High/Low Alarm, Auto Scan, Work
Light. #IR2000



Non-Contact Voltage Tester

Non-contact detection of standard voltage,
High intensity, bright green LED, Auto power-
off feature, CAT IV 1000 Volt rating, lightweight
And durable. #NCVT-2



Tape Measure—Magnetic

Rare Earth magnets are 5x stronger,
Easy Read, 30 foot, double hook, shock
And impact resistant case.

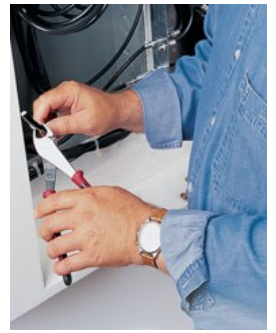
#93430



KLEIN TOOLS

For Professionals...Since 1857®





High-Leverage Side-Cutting Pliers #D213-9NE
Streamlined design with sure-gripping, cross-hatched knurled jaws.

High-Leverage Diagonal-Cutting Pliers #D228-8
Rivet is closer to the cutting edge for greater cutting power.



High-Leverage Diagonal-Cutting Pliers Angled Head #D248-8
Angled head design for easy work in confined spaces.

Standard Long-Nose Pliers - Side Cutting #D203-8
Induction hardened, long-lasting cutting knives. Knurled jaws for sure wrapping and looping.



Pump Pliers #D502-6
Secure tongue and groove design for non-slip grip. Wide range of versatile jaw positions.

10" Quick-Adjust Klaw Pump Pliers #D504-10B
Push button and quick ratchet feature allows for fast and easy Work in small or hard to reach spaces.



High-Leverage Side-Cutting Pliers—Fish-Tape Pulling #J2000-9NE
Quickly and easily pulls flat steel fish tape without damaging the tape. Streamlined design with sure-gripping, cross-hatched knurled jaws.



Cushion-Grip Insulated 9-Piece Screwdriver Kit #33528

Three sizes of each tip style: cabinet, keystone, and Phillips.
Two layers of insulation protect against electric shock.
Highly durable, black nylon case—15.5x11x2.5"



Ratcheting Multi-Bit Screwdriver/Nut Driver

Heavy-duty, high-torque capability with comfortable Cushion-Grip handles. **#32558**



11 in 1 Screwdriver/Nut Driver

Holds 8 popular tips and converts to 3 nut driver sizes.
End of handle is marked to quickly identify tool. **#32500**



**7 Piece Hollow-Shaft
Magnetic Tip
Cushion-Grip
Nut Driver Set 3" Shafts
#631M**

KLEIN TOOLS



8 Piece Cushion Grip Screwdriver Set

#85078

Includes one cabinet-tip, three keystone-tip, and four Phillips-tip styles.



Stubby Multi-Bit Screwdriver/Nut Driver

Work in tight spaces, shaft hold 4 universal tips
And converts to 2 nut driver sizes. **#32561**



10-in-1 Folding Screwdriver/Nut Driver

Folds for easy storage or in pocket.
Each driver contains 4 interchangeable bit styles and two nut Drivers. **#32535**



Cushion-Grip Triple Taps and Six-in-one Tap Tool

Quickly forms new threads, re-forms burred threads. **#626**

TOOL KITS AND SETS



8-Piece Master Electrician's Hole Cutter Kit
Split point pilot drill bit prevents bit walking.
Integrated flange prevents the operator
from drilling beyond the sheet metal.
#31873



T-Handle Hex-Key Set with Stand—Inch
9" Length—Inch Metal stand for
convenient mounting on Bench or wall.
#JTH910E



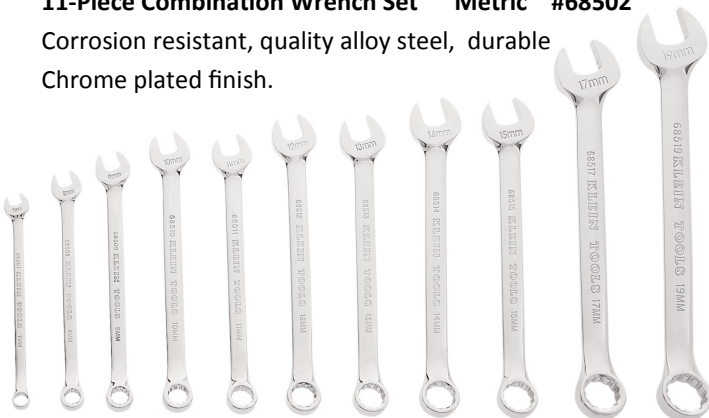
Hex-Key Set #70591
Two-key positions, fits in your
Pocket or tool box easily.



9-Piece Combination Wrench Set #68402
Corrosion resistant, quality alloy steel, durable
Chrome plated finish.



11-Piece Combination Wrench Set Metric #68502
Corrosion resistant, quality alloy steel, durable
Chrome plated finish.



5-Piece Ratcheting Box Wrench Set
Laminated construction,
Corrosion resistant, chrome plated
Reverse ratcheting action.
#68221



WIRE STRIPPERS/CUTTERS



Wire Strippers/Cutters #11055
East-to-read markings, precision shear-type blades.



Wire Strippers/Cutters #11045
Compact, lightweight, narrow nose.
Do not use for cutting steel wire or bolts.



Multi-Purpose Electrician's Tool—8-22 AWG #1001
Two wire cutters, Color-coded crimping dies, cleanly shears



Haven's Grips #1625-20
Knurled eccentric jaw applies gripping Pressure to 1/4" of cable area. Used for Guy strand and wire rope.

KLEIN TOOLS



Trip-Saver #1016
Unique multi-tool addresses the special needs of electricians and maintenance professionals.



Crimping/Cutting Tools #J1005
Non-Insulated/Insulated Terminals



Ratcheting Cable Cutters #63060
High-leverage ratchet mechanism for Single-handed cutting of copper and aluminum cables, leaving no burrs.



LIGHTING



ELECTRONIC T-8 BALLASTS

49943 B-2X32T8 120-277V

49945 B-3X32T8 120-277V

49947 B-4X32T8 120-277V

IOP2P59SC B-2X96T8 120-277V

B286I120RH B-2X98T8/HO 120V

ELECTRONIC T-12 BALLAST

B134SR120 B-1XF40 120V

B234SR120 B-2XF40 120V

B234SR277 B-2XF40 277V

B250IUNVHP B-2XF96T12 120-277V

B295IUNVHP B-2XF96T12/HO 120-277V



MAGNETIC SIGN BALLASTS

USB-0218-16 [1-6 Lamp] 2' to 18'

USB-1232-16 [1-6 Lamp] 12' to 32'

USB-1048-16 [1-6 Lamp] 10' to 48'

MSB-0412-12 [1-2 Lamp] 4' to 12'

MSB-0620-24 [2-4 Lamp] 6' to 20'

USB-0816-14 [1-4 Lamp] 8' to 16'

MAGNETIC SIGN BALLAST

MSB-1224-24 [2-4 Lamp] 12' to 24'

USB-1632-24 [2-4 Lamp] 16' to 32'

MSB-2040-24 [2-4 Lamp] 20' to 40'

USB-2036-46 [4-6 Lamp] 20' to 36'

MSB-1240-46 [4-6 Lamp] 12' to 40'

MSB-2428-46 [4 to 6 Lamp] 24' to 48'

ELECTRONIC SIGN BALLASTS

ESB216-12 [1-2 Lamp] 2' to 16'

ESB432-14 [1-4 Lamp] 4' to 32'

ESB848-46 [4-6 Lamp] 8' to 48'



FLUORESCENTS

LIGHTING



SINGLE PIN

F24T12W	20W	24"
F36T12W	30W	36"
F42T12W	35W	42"
F48T12W	39W	48"
F60T12W	50W	60"

F64T12W	51W	64"
F72T12W	56W	72"
F84T12W	65W	84"
F96T12W	60W	96"

Available in Daylight or Cool White

BI- PIN

F15T12W	15W	18"
F20T12W	20W	24"
F30T12W	30W	36"
F40T12W	40W	48"



RECESSED DBL CONTACT/HIGH OUTPUT

F24T12CWHO	35W	24"
F36T12CWHO	50W	36"
F42T12CWHO	55W	42"
F48T12CWHO	60W	48"
F60T12CWHO	75W	60"

F64T12CWHO	80W	64"
F72T12CWHO	85W	72"
F84T12CWHO	100W	84"
F96T12CWHO	110W	96"

LED FLUORESCENT BULBS

LED Fluorescent Lamps consume 60% energy and have 5 times the life expectancy of conventional Fluorescent lighting. Our lamp will fit into any existing T-8, T10, or T12 fixture, with just a small wiring modification. The lamps are quick and easy to install as there is no ballast necessary. The lamps are available in 2,4,6, and 8' lengths. All lamp are constructed of an aluminum base SMD Diodes, and a high strength polycarbonate covering which provides maximum protection against vibration and damage.



FC12T9 CIRCLINE RAPID START
32 WATTS 12" DIAMETER



TUBE GUARDS w/ End Caps
Protective Lamp Sleeve



LIGHTING

FLUORESCENTS LAMPHOLDERS



466

466 & 467—Tombstone for single pin lamps. Fits 1.125" square hole pedestal type bolt down mounting



467



464



465

464 & 465—Tombstone for High Output lamps. Same mounting as the 466 & 467.



517

516 & 517—Snap in lampholder for single pin lamps. Fits 1.52" round hole with keyway.



516



2536



2537

Slide in lampholder for single pin lamps. Shallow base, push in wire terminals.



452

End or bracket mount with 12" leads



453



13055

Standard Bi-pin lampholder for commercial light fixtures. Slide in end mounting.



530.1K



530.2K

High output lampholder for OEM applications. Vertical contacts with rubber gasket.

LIGHTING HALOGEN

QL505 FLOOD LIGHT



QL-TB MOUNT

QL1505 FLOOD LIGHT

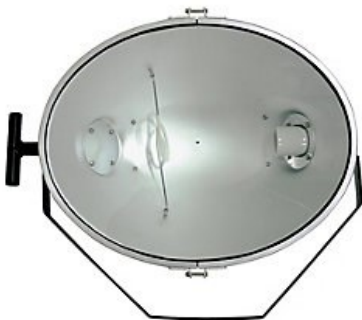


Image for reference only

LENGTH	WATTS	VOLTS
3 1/8"	150W	120V
4 11/16"	300W	120V
4 11/16"	300W	130V
4 11/16"	500W	120V
4 11/16"	500W	130V
4 11/16"	500W	220V
7 1/2"	1000W	120V
7 1/2"	1000W	240V
10 1/16"	1500W	240V

LIGHTING METAL HALIDE

99319 FIXTURE

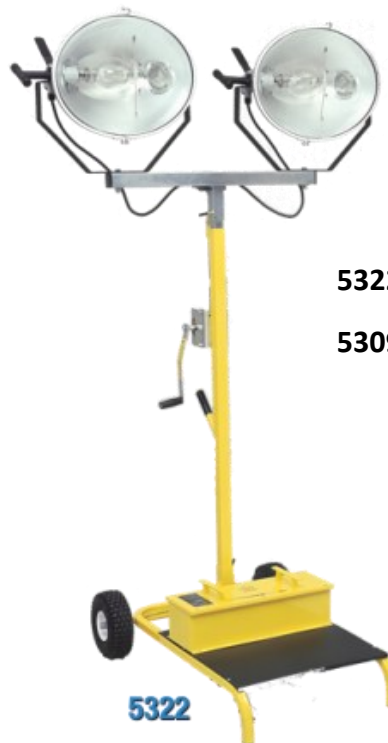


99321 BALLAST

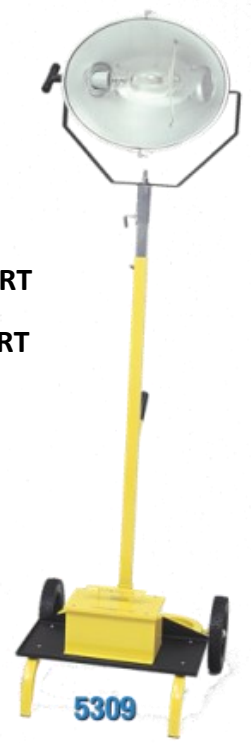


5322 DBL CART

5309 SGL CART



5322



5309

LIGHTING

METAL HALIDE



INTRODUCING THE NEW CL400P PULSE START METAL HALIDE HIGH BAY

Due to standards set by the Department of Energy and the Energy Independence & Security Act, All manufacturers are required to change over from Probe Start to the more energy efficient Pulse Start Ballast. This new requirement is in effect for all Metal Halide lamps equal to or greater than 150W and less than 500W.

What does that mean for us:

88% Efficient Ballast

Multi-Tap Ballast 120V, 208V, 240V 277V

Prewired for 120V

Faster Warm-Up Time

Probe = 3-4 minutes

Pulse = 2 minutes

Faster Re-Strike Time

Probe = 10-20 minutes

Pulse = 3 - 4 minutes

More Light

29,820 lumens vs 24,000 lumens

Allows for greater fixture spacing
and less wiring cost

Cat NO: CL400P(DL732AM401PS)

Cat NO: CL400P(DL732AM401PS)

NOT FOR USE IN DWELLINGS
USE MINIMUM 10' CLOTH WIRE
CAUTION - RISK OF FIRE
TO REDUCE THE RISK OF FIRE, EXPOSURE,
USE ONLY LAMP IDENTIFIED AS HAVING A UV FILTER.
DO NOT INSTALL LAMP IDENTIFIED FOR USE ONLY IN
ENCLOSED LUMINAIRES
PREWIRED 120V IN FACTORY

CAUTION - RISK OF FIRE
USE ONLY PS M1400 WATTS
TYPE M155/M135 LAMP
ASSEMBLY PART TYPE
10" WIRE GUARD AND
BOTTOM COVER

Meets OSHA and NEC guidelines
for pulse start efficiency



7800 LAS POSITAS ROAD LIVERMORE, CA 94551

(800) 678-3470 FAX: (925) 828-3416 WEBSITE: WWW.CEPNOW.COM

CABOCHONS

LIGHTING



FUN LIGHT 211

Red, Yellow, Green,
Orange, Blue, Purple



Universal V060 & V090 Lighting Systems

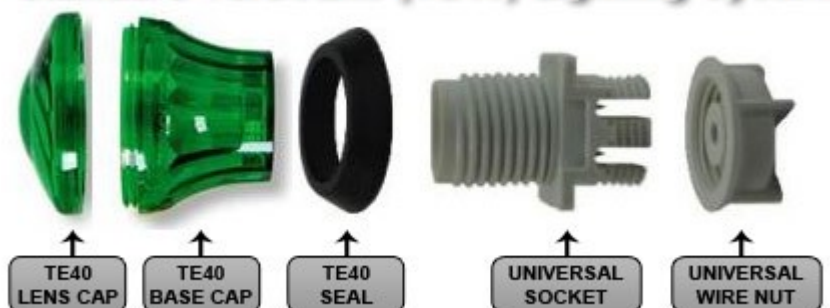


TL—47 Turbo Light Cabochons

Leading brand of Cabochons adorn
the Midway on concession trailers,
ticket boxes, sign marquees,
amusement rides, etc.
Available in these 9 colors.



Standard TurboLite (TE40) Lighting System



LIGHTING

BULBS—INCANDESCENT

SIGN BULBS 7.5S11 7.5 Watt/130V



CERAMIC COLORS
AVAILABLE
White, Red, Yellow,
Green, Orange, Blue



TRANSPARENT COLORS
AVAILABLE
Clear, Red, Yellow,
Green, Orange, Blue,
Amber, Pink, Purple

SIGN BULBS 11S14

CERAMIC COLORS
AVAILABLE
White, Red, Yellow,
Green, Pink, Blue



TRANSPARENT COLORS
AVAILABLE
Red, Yellow, Green,
Blue,
Clear, Amber, Aqua,



SIGN BULBS 110S11 10 Watt/130V



CERAMIC COLORS
AVAILABLE
White, Red, Yellow



TRANSPARENT COLORS
AVAILABLE
Pink, Red, Yellow,
Blue, Green, Amber, Clear

T-3 MINITURE LIGHTS

European E-10 Nickel-plated
60V 4W Super Long Life!
24V 3W, 60V 4 W, 130V 2.5W



T-5.5 MINITURE LIGHTS

European E-14 Nickel-plated
60V 8W Super Long Life!
130V 10W Super Long Life!
24V 5 W, 50V 10W,
130V 10W, 130V 12 W



MISCELLANEOUS

H-3



Festoon



AR111



BA15s



167-2 660W/250V



H-1



T-3 1/4



S-8



BA20s



S248 660W/250V



LIGHTING

LEDs

E14-8-SMD



E14-5-SMD



E14-16-SMD



S14 10 LED



E10-4-SMD



MR 16 LED



LED FLOODLIGHT

HIGH POWERED, WIDE DISTRIBUTION LED FLOODLIGHT Designed to replace standard Quartz fixtures. Available in 10,50,70, 100, & 150 watt.

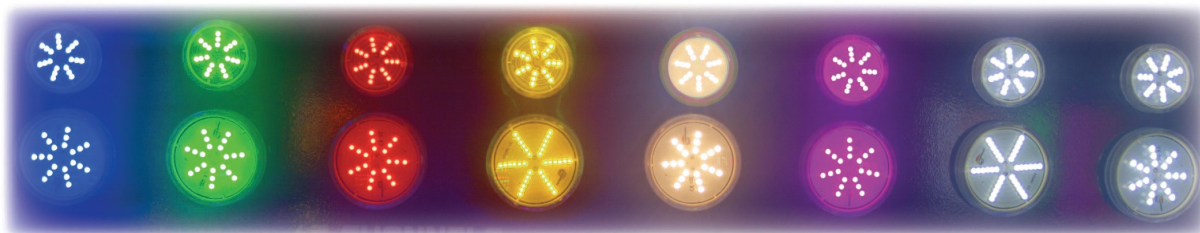




LED Turbo Bulbs

Camaleón L

- Color: Programmed RGB
- Input Voltage: AC 24v - Power: 1W
- Led Type: SMD 3528/SMD 5050
- Led Quantity: 9 Leds (9 on the front)
- Channel Quantity: 16
- Life Span: 50000H
- Waterproof Grade: IP65
- Front Size: 40mm/1.57 Inches
- Back Size: 20mm/0.78 Inches and 40mm/1.57 Inches



Cabochon L

- 7 Available Colors: Red, Green, Blue, Yellow, Pink, White & Warm White
- Input Voltage: AC 24v/60v/110v/220v - Power: 1W
- Led Type: SMD 3528
- Led Quantity: 21 Leds (16 on the front)
- Life Span: 50000H
- Waterproof Grade: IP65
- Front Size: 40mm/1.57 Inches
- Back Size: 20mm/0.78 Inches and 40mm/1.57 Inches

E14 Auto

- Color: Programmed RGB
- Input Voltage: AC 24v - Power: 2W
- Led Type: SMD 3528/SMD 5050
- Led Quantity: 16 Leds (12 on the front and 4 on the back)
- Channel Quantity: 16
- Life Span: 50000H
- Waterproof Grade: IP65
- Front Size: 35mm/1.37 Inches
- Back Size: E14



813-681-6666
www.galaxysales.net

Galaxy
amusement sales
YOUR FULL LINE MIDWAY SUPPLIER

123 W. Bloomingdale Ave. #259 Brandon, FL 33511
email: galaxysales@verizon.net fax: 813-653-0365

LUBRICANTS

CHAIN LUBES



CLEANERS & DEGREASERS



ENGINE OILS



PENETRATING OILS



GEAR LUBES



GREASES



HYDRAULIC FLUIDS



FUEL ADDITIVES

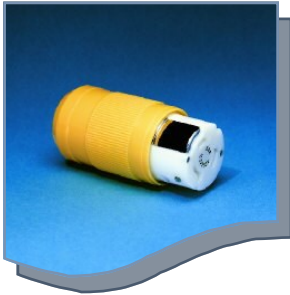


TIRE SEALANTS

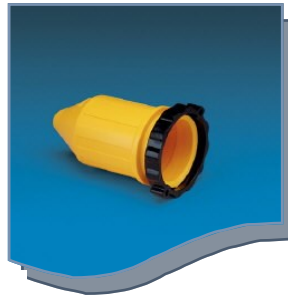
RV SUPPLIES



50 AMP DETACHABLE POWER PRODUCTS



FEMALE CONNECTOR
50A 125/250V
6364 CRV



WEATHERPROOF COVER
W/ EASY LOCK RING
7715 ELRV

STANDARD POWER INLET
WATERTIGHT
6353 ELRV



DETACHABLE POWER ADAPTER



RV "Y" ADAPTER
50A 125/250V
169 AYRV

GENERATOR ADAPTERS

30 AMP LOCKING [4 prong]
172 ARV



50 AMP LOCKING [3 prong]
173 ARV



50 AMP LOCKING [4 prong]
174 ARV



REPLACEMENT PLUGS



30 A
USE W/10 GAUGE
30AMP RV CABLE
30MPRV



50 A
USE W/6 GAUGE
50AMP RV CABLE
50MPRV

STRAIGHT-BLADE ADAPTERS

RV SUPPLIES



50A—30A

RV ADAPTER

5030 ARV



30A—50A

RV ADAPTER

3050 ARV



30A—15A

RV ADAPTER

3015 ARV



15A—30A

RV ADAPTER

1530 ARV



REPLACEMENT

RECEPTACLE

RV-14-50



REPLACEMENT

RECEPTACLE

TT-30R



CHEATER BOX

VOLTAGE
REGULATOR
120/240V 50A
10175



PORTABLE RV
SURGE GUARD
240V/50A HIGH/LOW
34750



DIGITAL LINE
MONITOR LCD
AEC20020



PAINT



MONTANA PAINT

LIGHT CREAMY GREEN

NEON GREEN

SIGNAL GREEN

SOFT TEAL

CARNIVAL PURPLE

CARNIVAL VIOLET

CARNIVAL MAGENTA

CARNIVAL PINK

CARNIVAL BLUE

TURQUOISE

FLAME RED

VIPER RED

CARNIVAL RED-ORANGE

CARNIVAL ORANGE

CARNIVAL YELLOW

LAS VEGAS GOLD

PURE WHITE

GM FLEET WHITE

LT. METALLIC SILVER

CARNIVAL GREY

CARNIVAL DARK TEAL

DARK TURQUOISE

JET BLACK

BOO BERRY PURPLE

RADIANT RED

PRIMER—PS5005A-G

PRIMER—PS5004B-G

CLEAR COAT—CRV22G

CLEAR COAT—CR22AF-Q

CLEAR COAT—CR22AM-Q

ACTIVATOR—PO35AN-Q

COLOR CHARTS AVAILABLE

US PAINT

CLOUD WHITE

GM FLEET WHITE

SUPER JET BLACK

SILVER METALLIC

PURE WHITE

GOLD METALLIC

LEMON YELLOW

BANANA YELLOW

CARNIVAL YELLOW

CARNIVAL ORANGE

SUNSET ORANGE

TANGERINE ORANGE

PUMPKIN ORANGE

TOREADOR RED

SUNFAST RED

RASPBERRY

CARNIVAL TEAL

SEA FOAM

BOO BERRY

LIGHT VIOLET

BERRY PURPLE

PURPLE SMOKE

PLUSH PURPLE

PLUM

LIME GREEN

KELLY GREEN

ALIEN GREEN

TURQUOISE

MED TURQUOISE

DARK TURQUOISE

POWDER BLUE

CAROLINA BLUE

CARNIVAL BLUE

NAVY BLUE

MARLIN BLUE

AQUA BLUE

CREAM

HOT PINK

LIGHT PINK

MAGENTA

CARNIVAL PINK

HIGH GLOSS CLEAR

PRIMER

545 EPOXY WHITE

CONVERTER

5454 EPOXY

ACTIVATOR

BRUSCH

A-4 COOL

A-1 FAST



CUSTOM RACKED SOUND SYSTEMS

Galaxy Amusement & Peavey Electronics has the answer for all your Midway Sound needs. Big or small, simple or complex, we can manufacture a Custom System that is durable, reliable, and serviceable to fit your ride or concession.

This is gear you can count on, date after date, city after city. This system can handle what you know is one of the toughest gigs in the entertainment industry.

Loudspeakers with field-replaceable speaker baskets and weather-resistant cabinets, units shock-mounted for rugged use, and amps that stay cool, even when the weather doesn't.

The result: The Best and Most Complete P.A. Systems in the Amusement Industry.



SOUND

AMPLIFIERS

CS SERIES— Peavey's CS Series is the global standard bearer for workhorse reliability. 2 RU design up to 4080 watts is leaner, louder, and lighter.



PV SERIES— Peavey's PV Series power amps retain their 2 channel design, high power points, and Exclusive Peavey features and technology.



IPR SERIES— IPR1600 features 2 channel independent fourth order Linkwitz crossovers and the revolutionary new IPR class D technology.



IPR SERIES— IPR-DPS1600 features independent, assignable crossover points, delay, EQ presets, SECURITY LOCK SETTINGS, and an intuitive set up wizard.



MICROPHONES & HEADSETS

WS5E WINDGUARDS
5 PACK



PVi SERIES— MICROPHONE
Dynamic cardioid microphone.
Comes with carrying pouch, mic clip,
And 6 meter XLR cable.



AIRLINE 77

MIXERS

XR8600D



XR8300



XR SERIES— MIXERS

New improved low noise

Mic preamps, multi point clip

sampling and new subsonic filter to prevent low frequency power robbing.

PVi SERIES— MIXERS

Powered mixers are easy to use and transport. They are designed with exclusive Peavey technology.

PVi8B



PVi4B



PROCESSORS

FEEDBACK FERRET D—Audio Processor

Advanced computer algorithm automatically identifies and suppresses microphone feedback.



KOSMOS V2 —Audio Processor

Second generation sub harmonic and Stereo enhancement system improves the listening system.



REPEATERS



THE ULTIMATE MUSIC/MESSAGE REPEATER

Stand alone stereo playback of standard MP3 or WAV files built into a weatherproof non-metallic Nema 4X enclosure. Audio is stored on Secure Digital [SD Cards].

Capacity is limited to size of the card.

Units can play continuous, sequential, random, or audio files can be triggered in multiple ways.

[Push button, or any other input device]

You can load your messages in the SD card, or we can customize one for you with professional voice over talent, and CD quality sound and effects. Units have a Built-in Class D amplifier with output power Equivalent to a 200 Watt linear amplifier. Units Can be used with 50-200W speakers.

SOUND

SPEAKERS

IMPULSE SERIES SPEAKERS

1015 & 1012

Ultra High Performance, weather resistant,
Two way speaker system. 12" or 15" Black
Widow Woofers with a Kevlar cone.



IMPULSE II, 6, 6T

Small monitor, 2—4 1/2" speakers and
A bi-morph high frequency driver.
6T—Indoor/Outdoor



IMPULSE 7

Two way molded
loudspeaker.

SP SERIES SPEAKERS

Engineered for optimal sound reproduction with proven reliability.

SP2—15" Black Widow 4" Voice Coil Woofer—1000 watts

SP3—15" Black Widow 4" Voice Coil Woofer—1200 watts

SP4—2—15" Black Widow 4" Voice Coil Woofer—2000 watts



SP118—18" Pro Rider Black Widow Woofer—1200 watts



SP 218—2—18" Pro Rider Black Widow Woofers—2400 watts

GFORCE RANGE

GFORCE 3



SPEC **SIZE:** 10.5"(H) x 11.625"(W) x 18"(D)
With Bottle Carrier: 10.5"(H) x 11.625"(W) x 21.5"(D)
POWER: 120v, 50/60Hz, 2 kW 17A
WEIGHT: 35lbs

The Le Maitre GForce range of high powered, continuous flow, water based smoke machines are all based on the core technologies of G300.

FEATURES INCLUDE

- Massive smoke output - 51000 cbm/hr
- Fluid consumption 1.5cc/s (cont); 8cc/s (burst) (45min/4L bottle)
- Removable bottle carrier on rear of machine
- Onboard DMX 512 support
- Onboard, user programmable, time on / time off
- Onboard, user programmable, pre-chill time for Freezefog Pro / LSG triggering
- Integral power port for Freezefog Pro / LSG
- Comes with timer remote control
- Optional AUX port for external fan control - with Onboard, user programmable control

FLUIDS: Standard, Global Long Lasting, Quick Dissipating, Extra Quick Dissipating, Molecular, EZ KLEEN

ACCESSORIES: Road Case; ducting adapter; AUX port

GFORCE 2



SPEC **SIZE:** 10.5"(H) x 11.625"(W) x 18"(D)
With Bottle Carrier: 10.5"(H) x 11.625"(W) x 21.5"(D)
POWER: 120v, 50/60Hz, 2 kW 17A
WEIGHT: 31lbs

FEATURES INCLUDE

- Maximum smoke output - 25000 cbm/hr
- Fluid consumption 1.5cc/s (cont); 4cc/s (burst) (45min/4L bottle)
- Removable bottle carrier on rear of machine
- Onboard DMX 512 support
- Onboard, user programmable, time on / time off
- Onboard, user programmable, pre-chill time for Freezefog Pro / LSG triggering
- Integral power port for Freezefog Pro / LSG
- Comes with timer remote control
- Optional AUX port for external fan control - with Onboard, user programmable control

FLUIDS: Standard, Global Long Lasting, Quick Dissipating, Extra Quick Dissipating, Molecular, EZ KLEEN

ACCESSORIES: Road Case; ducting adapter; AUX port

GFORCE 1



SPEC **SIZE:** 10.5"(H) x 11.625"(W) x 18"(D)
With Bottle Carrier: 10.5"(H) x 11.625"(W) x 21.5"(D)
POWER: 120v, 50/60Hz, 1kW 9A
WEIGHT: 25lbs

FEATURES INCLUDE

- Maximum smoke output - 19000 cbm/hr
- Fluid consumption 0.75cc/s (cont); 3cc/s (burst) (1.5hr/4L bottle)
- Standard and DMX models
- Comes with timer remote control

FLUIDS: Standard, Global Long Lasting, Quick Dissipating, Extra Quick Dissipating, EZ KLEEN

ACCESSORIES: Road Case; ducting adapter

FROM STAGE AND FILM, TO SPORTING EVENTS, TO THEME PARKS AND FIRE SAFETY TRAINING, LE MAITRE OFFERS SMOKE MACHINES FOR EVERY OCCASION.

INTRODUCING

Dedicated to saving lives and protecting assets

Grip Guard® Cable Protectors

WITH A NEW LOOK!

After listening to feedback from our customers, we proudly introduce our new yellow and blue-grey GRIP GUARD® CABLE PROTECTORS! These lightweight cable protectors offer numerous features that out-perform competing rubber products, including a high visibility yellow lid and modular design that is easy to setup, disassemble and transport.

The Gripper® Connector is ergonomically designed to fit your hand.



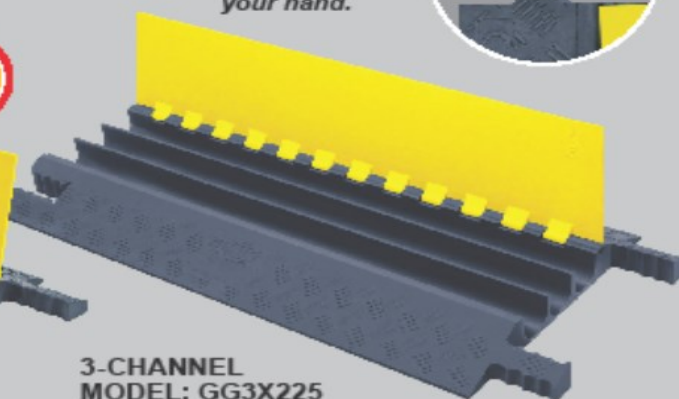
CE

**NEW
LOOK!**



**5-CHANNEL
MODEL: GG5X125**

Grip Guard 5-channel protects cables up to 1.25" outside diameter and is up to 60% lighter than polyurethane models, and up to 75% lighter than rubber models on the market.



**3-CHANNEL
MODEL: GG3X225**

Grip Guard 3-channel protects cables up to 2.25" outside diameter and is up to 33% lighter than polyurethane models and up to 50% lighter than rubber models on the market.

FEATURES

- Gripper® Connector System with hand-conforming grip
- At ONLY 12.75 lbs. Grip Guard is the world's lightest 5-channel cable protector by up to 75%!
- At ONLY 23 lbs. Grip Guard is the world's lightest 3-channel cable protector by up to 50%!
- Snap Fit™ hinged lid
- Made from tough, impact absorbing, non-conductive polyurethane that's resistant from oil, fuels and lubricants
- Patented 5-Bar tread pattern for maximum traction
- Blue-grey base with yellow lid



GRIP GUARD®
CABLE PROTECTORS

GRIP GUARD® CABLE PROTECTORS include many patent-pending features, including our "Gripper Connectors" with a lightweight design. They are constructed with maintenance-free polyurethane, which creates a easy-to-handle, lightweight cable protector that provides superior strength and durability.

The Gripper® Connector is ergonomically designed to fit your hand, which allows for easy handling and transport. This connector also locks multiple cable protectors together easily and tightly to provide a safer crossing for vehicle and pedestrian traffic while protecting valuable electrical cables and hose lines from damage. This modular interlocking design is ideal for use in most public entertainment events, light commercial and utility applications.

Modular interlocking design can be extended to any desired length!

PORTABLE POWER CABLE (UL) C(UL)

Available in: Custom Color, Any Length, Cut, Coiled, & Complete with Connector Assembly.

FEATURES

- Available colors: Black, blue, red, green, white, yellow, orange, brown or custom
- Extra Flexible Class K (ASTM-B) Bare annealed copper stranding
- -45°C to 105°C, 2000 Volt Rating, flame retardant
- Resistant to oil, water, acid, gas, ozone, cuts, tears and abrasion
- (UL) 2000 volt rating, C(UL) 600 volts continuous use
- Manufactured to (UL) & C(UL) standard 1650
- MSHA Listed
- Surpasses NEC 400 requirements and may be used in any application where Type W, G or G-GC cable is used

APPLICATIONS

Designed for use with industrial equipment, including portable generators, chillers, air conditioners, motor and welding leads, submersible wells, heavy tools, power extensions, marine dockside, "mining and oil drilling applications, where long-term quality performance at all operating temperatures is desired.

CONSTRUCTION

Conductor

- Bare, annealed electrolytic copper
- 30 AWG Class K rope lay stranding

DUAL INSULATED JACKETING TECHNOLOGY

Inner Jacket- Added for Your Safety

A separator of high contrast color is applied between the conductor and outer sheath for your added safety. This provides increased insulation, added flexibility, and allows you to easily identify damage or wear.

Outer Jacket

TYPE PPE (FT5) provides oil, water, acid, gas, ozone, resistance, flame retardant, durability and extreme flexibility at all operating temperatures.

Indented into outer jacket: (UL) TYPE PPE 90°C DRY 75°C WET SUN RES 2000V E204219 P-07-KA070022-MSHA AWG 4/0 C(UL) PPC/TPE FT5 90°C SUN RES 600V

AVAILABLE SIZES, SPECIFICATIONS & AMPERAGE CORRECTION FACTORS

Size	Stranding	Strand Nominal OD	Finished Nominal OD	Weight lbs. / M FT	Ampacity*
8	168 x 30	0.150	0.485	1.62	80
6	266 x 30	0.192	0.525	1.97	105
4	420 x 30	0.252	0.582	2.04	125
2	665 x 30	0.320	0.650	3.15	190
1	833 x 30	0.354	0.725	3.76	220
1/0	1064 x 30	0.397	0.775	4.80	260
2/0	1330 x 30	0.450	0.820	6.03	300
3/0	1691 x 30	0.510	0.880	7.16	350
4/0	2109 x 30	0.580	0.965	8.95	405



TEMPERATURE CORRECTION FACTORS **

Ambient Temp °C	FACTOR	Ambient Temp °F	Number of Conductors	Temperature Adjustment
21-25	1.04	70-77	4-6	80%
26-30	1.00	78-86	7-9	70%
31-35	0.96	87-95	10-20	50%
36-40	0.91	96-104	21-30	45%
41-45	0.87	105-113	41-40	40%
46-50	0.82	114-122	41+	35%
51-55	0.76	123-131	D. RATING FOR CONDUIT OR TRAY APPLICATION	
56-60	0.71	132-140		
61-70	0.58	141-158		
71-80	0.41	159-176		

Adjustment factor for more than three current carrying conductors

*For ambient temperatures other than 30°C (86°F) multiply the allowable ampacities stated above by the appropriate correction factor.

**Indented into sheath: (UL)

TYPE PPE 90°C DRY 75°C WET 2000VE204219 AWG 4/0 C(UL) PPC/TPE FT5 90°C 600 v

Values Listed are for single conductors, where the individual conductor is not installed in raceways or physical contact with each other except in the lengths not exceeding 24.0 inches.

WIRING & CABLE



MULTI CONDUCTOR POWER CABLE TYPE SOOW 90 DEGREE c 600 VOLT UL/CSA PORTABLE CABLE

# OF COND.	AWG SIZE	THICKNESS		NOMINAL OD		CURRENT AMPS
		INCHES	MM	INCHES	MM	
3	16	0.03	0.76	0.39	9.91	13
3	14	0.045	1.14	0.535	13.59	18
3	12	0.045	1.14	0.595	15.11	25
4	12	0.045	1.14	0.65	16.51	20
3	10	0.045	1.14	0.66	16.76	30
4	10	0.045	1.14	0.715	18.16	25
3	8	0.06	1.52	0.855	21.72	40
4	8	0.06	1.52	0.98	24.89	35
5	8	0.06	1.52	1.075	27.3	28
4	6	0.06	1.52	1.08	27.43	45
5	6	0.06	1.52	1.2	30.48	36
4	4	0.06	1.52	1.26	32	60
5	4	0.06	1.52	1.365	34.67	48
4	2	0.06	1.52	1.46	37.08	80
5	2	0.06	1.52	1.58	40.13	64



MULTI CONDUCTOR POWER CABLE TYPE W 90 DEGREE c 2000 VOLT UL/CSA PORTABLE CABLE

# OF COND.	AWG OR MCM	THICKNESS		NOMINAL OD		CURRENT AMPS
		INCHES	MM	INCHES	MM	
4	8	0.06	1.52	0.985	25.02	65
4	6	0.06	1.52	1.09	27.69	87
4	4	0.06	1.52	1.22	30.99	114
4	2	0.08	2.03	1.42	36.07	152
5	8	0.06	1.52	1.05	26.67	52
5	6	0.06	1.52	1.205	30.61	69
5	4	0.06	1.52	1.55	39.37	91
5	2	0.08	2.03	1.61	40.89	121

EXTENSION CORDS



MATTING



Deck Plate Runner

5/32" thick diamond-plate vinyl runner

Medium to heavy-duty, dry areas.

Distinctive raised-diamond pattern

Increases traction and durability.

Easy to clean surface.

Resistant to most common chemicals.

Available in colors:

Black, Gray, Black with Yellow,
Red, Green, Orange, Blue, or Safety-Aware Borders

Sizes:

2' x 75', 3' x 75', 3' x 75'

GALAXY AMUSEMENT SALES, INC

123 W Bloomingdale Ave #259

Brandon, FL 33511

800-404-5873 • 813-681-6666

www.galaxysales.net

Email: galaxysales@verizon.net